

# COMMUNITY WILDFIRE PROTECTION PLAN

## APPENDIX-C



## GROVE STREET FIRE SAFE COUNCIL, INC.

FOR THE COMMUNITIES LOCATED ALONG THE GROVE STREET  
CORRIDOR IN THE WEST SONOMA HILLS

### Development

This Community Wildfire Protection Plan (CWPP) Appendix-B was developed by the *Grove Street Fire Safe Council (GSFSC)* with guidance and support from Fire Safe Sonoma, the County of Sonoma, The California Fire Safe Council, and the California Department of Forestry and Fire Protection. This CWPP supplements the Sonoma County Community Wildfire Protection Plan. JULY, 2020

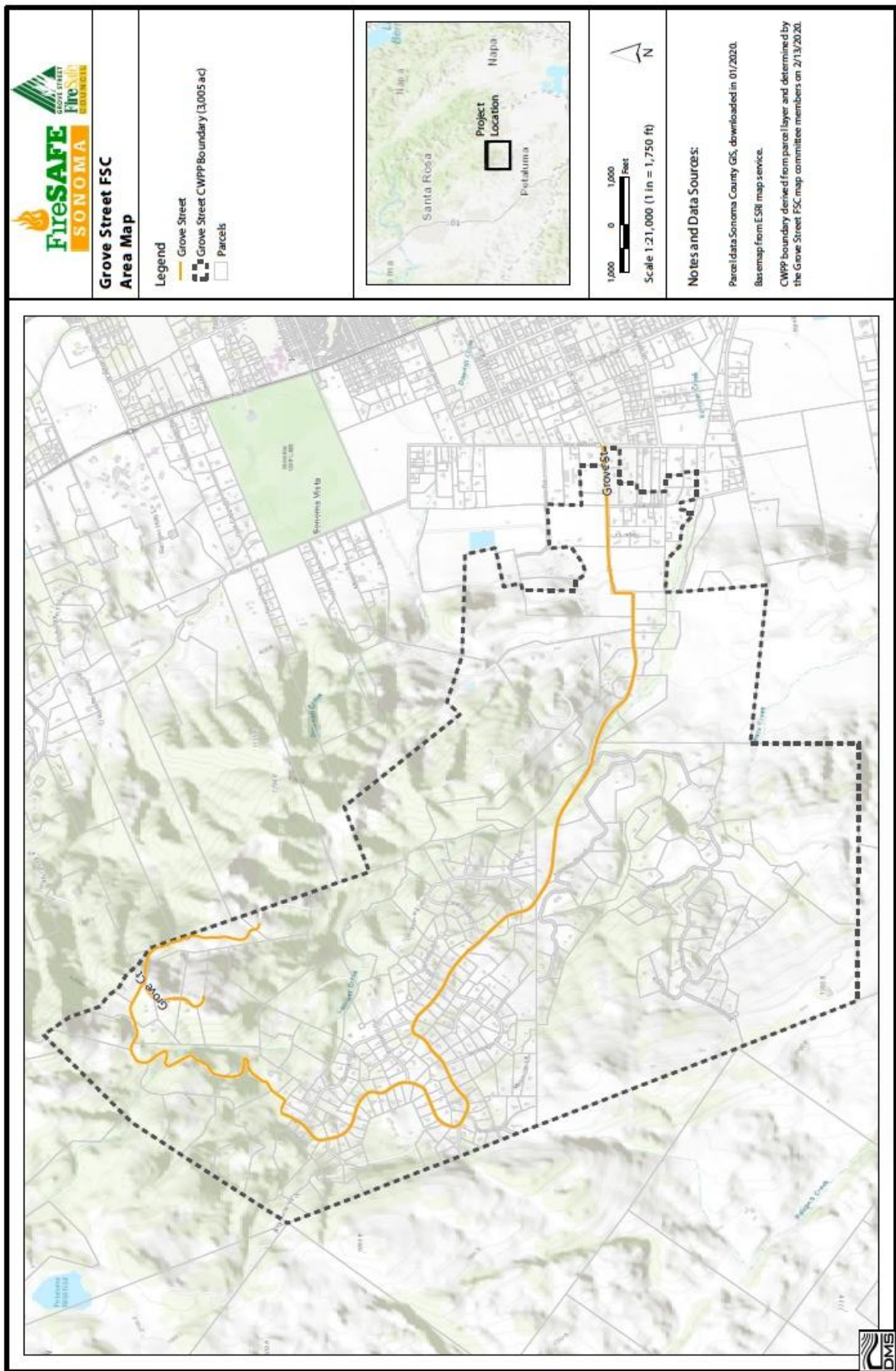
Grove Street Fire Safe Council Inc.  
<http://grovestreetfsc.org/>

# Contents

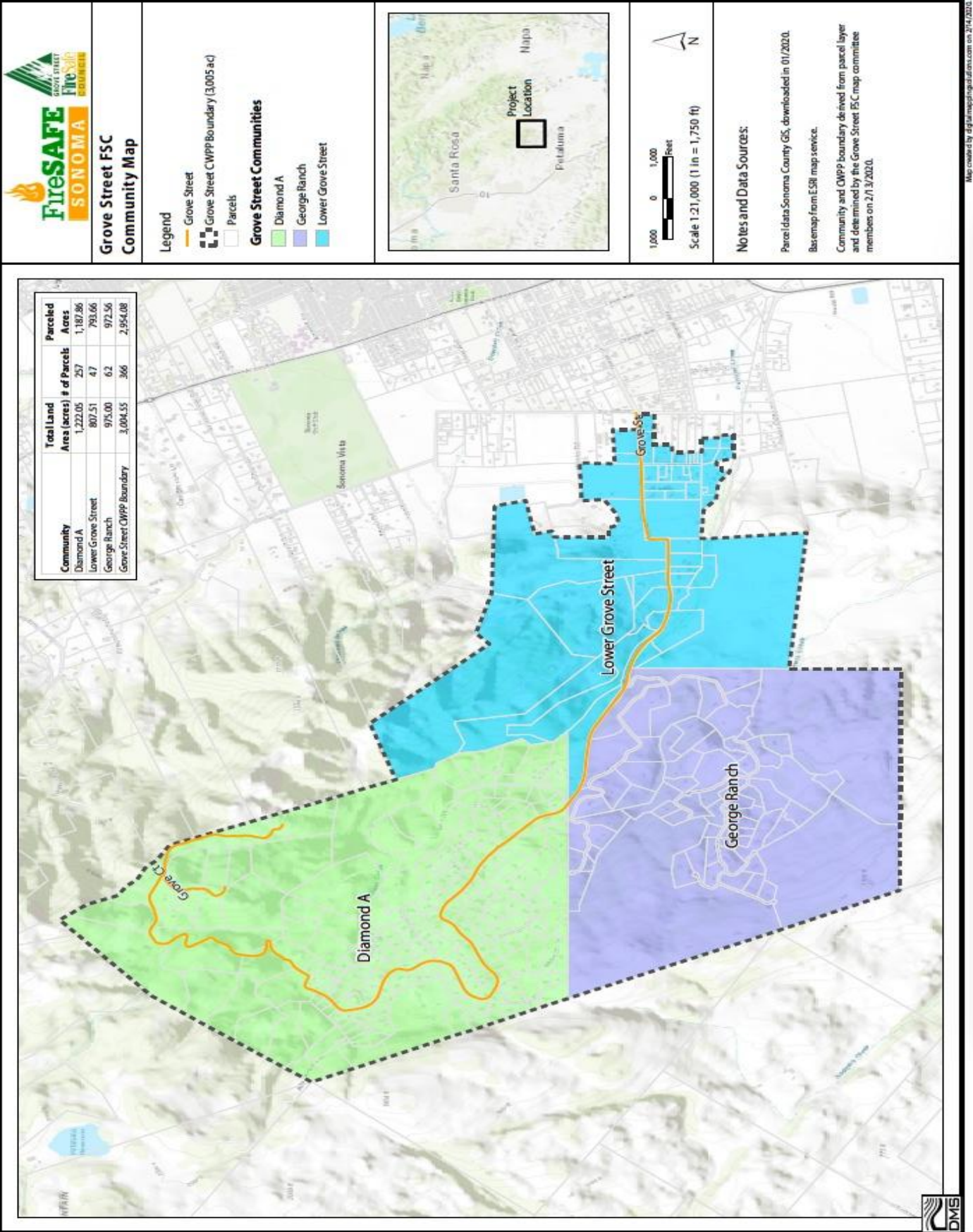
## Table of Contents

AREA MAP.....	2
COMMUNITY MAP .....	3
WUI MAP.....	5
FIRE HISTORY MAP.....	6
VEGETATION MAP.....	7
PARCEL MAP.....	8
FUEL LADDER MAP.....	9
SLOPE MAP .....	10
ASPECT MAP.....	11

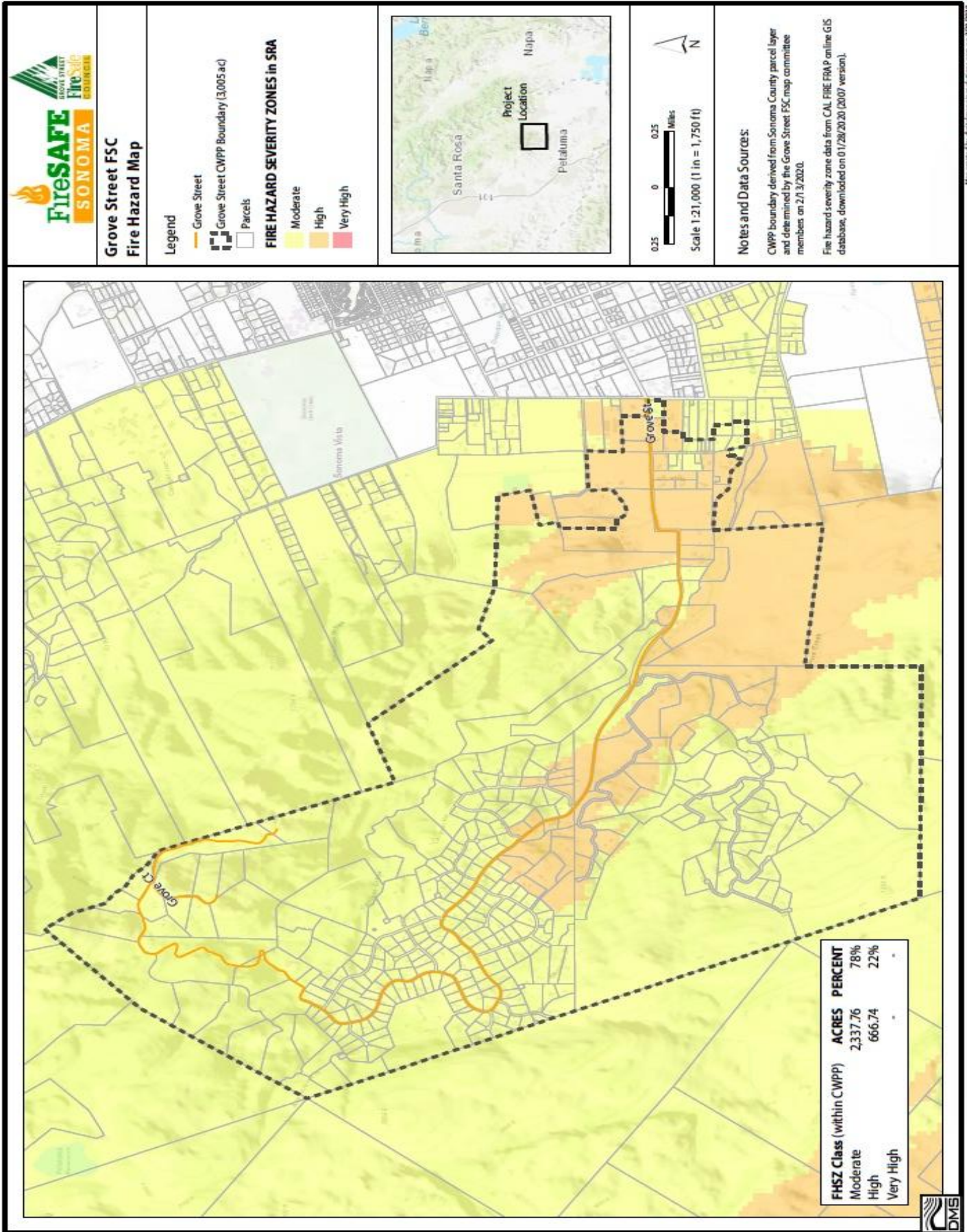
# Area Map

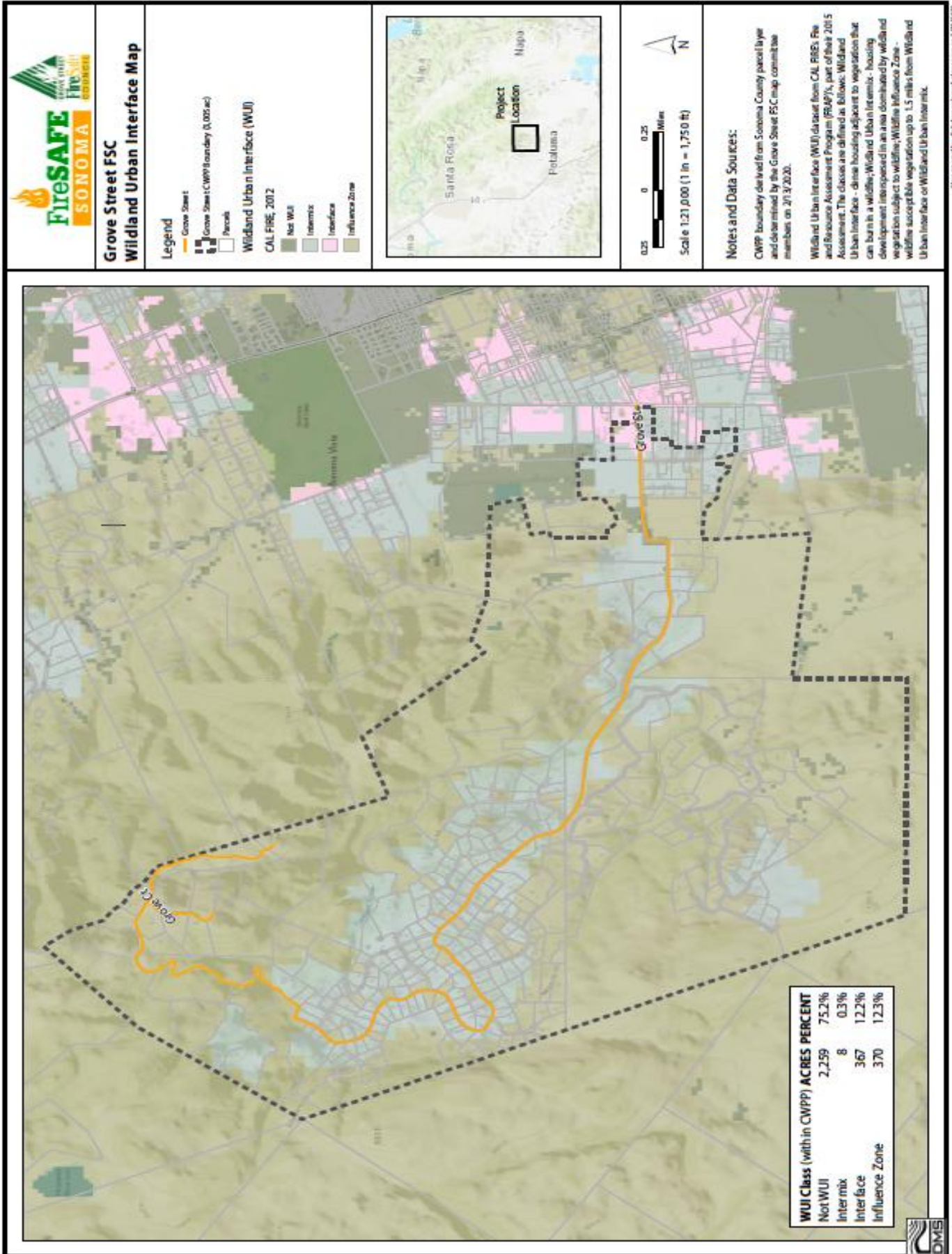


# Community Map

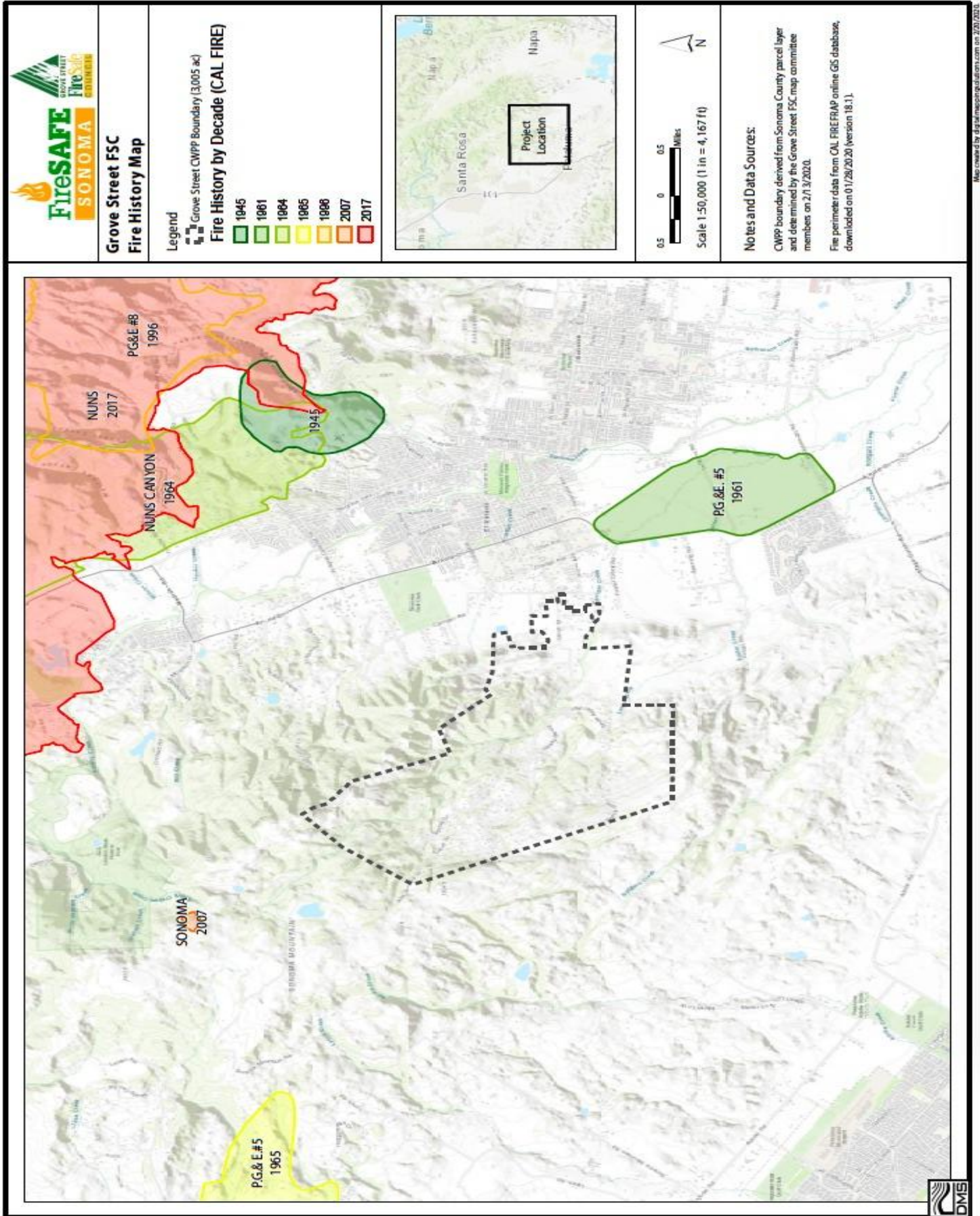


# Fire Hazard Map

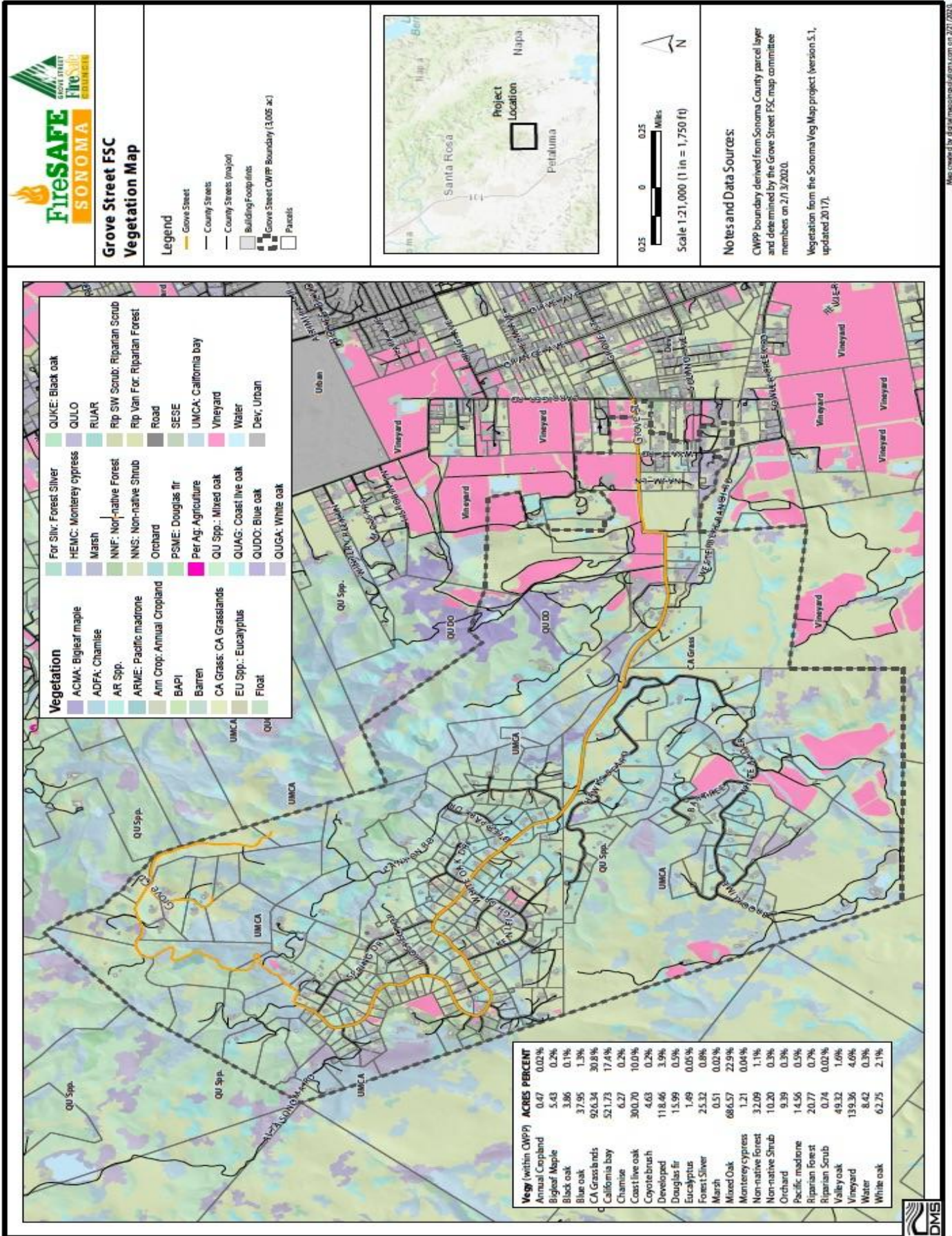




# Fire History Map



# Vegetation Map

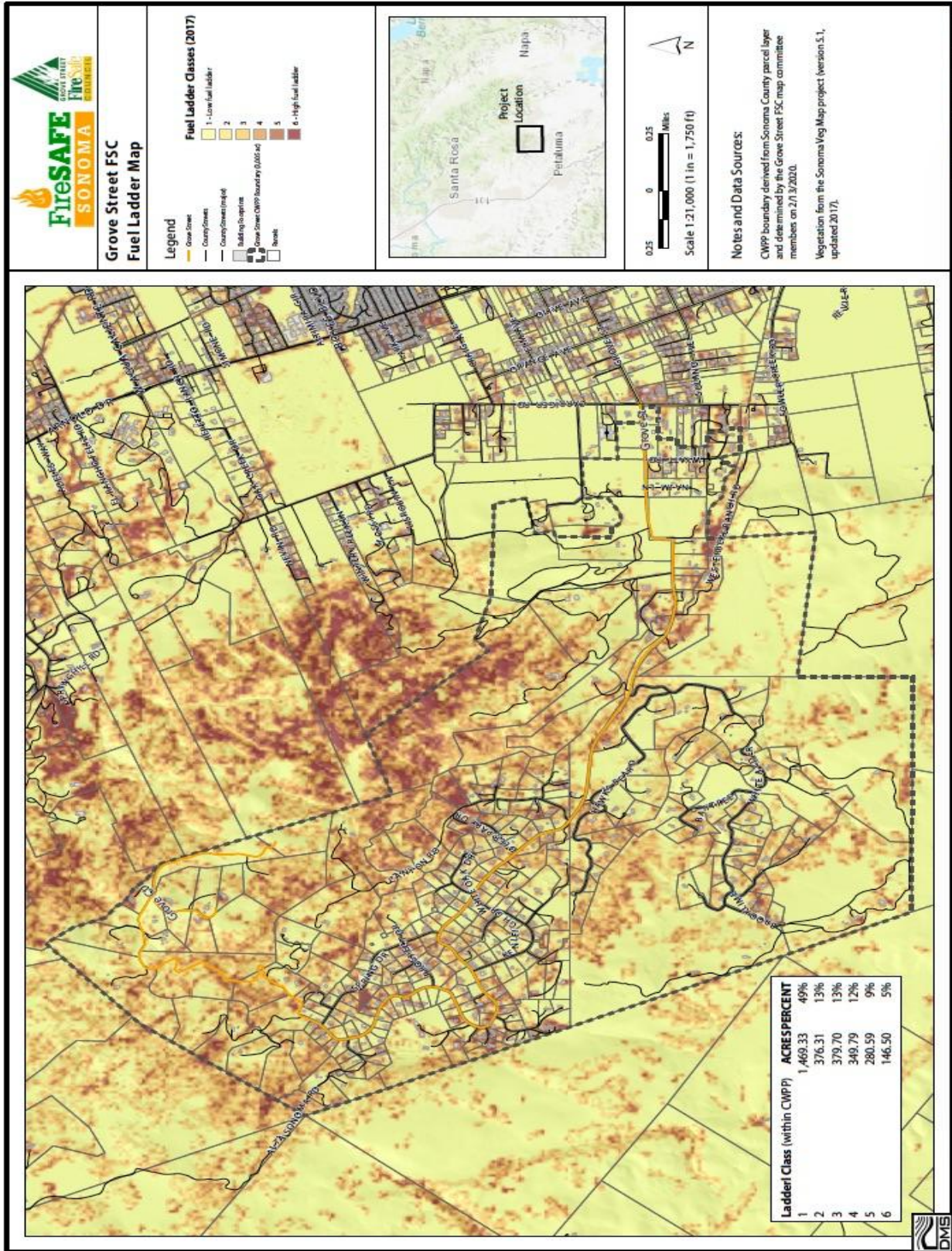




Parcel Map

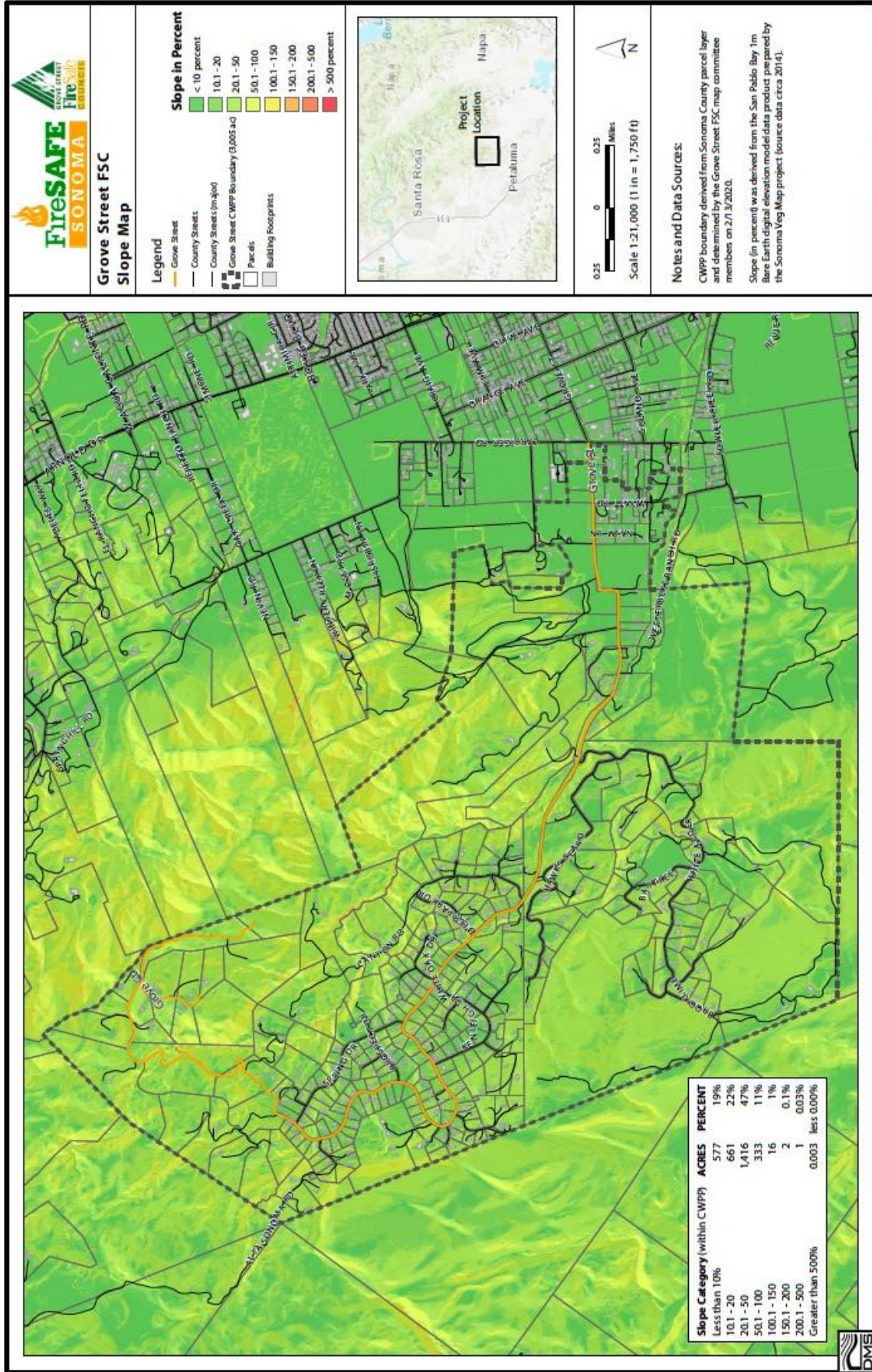


# Fuel Ladder Map



Map created by dgs@mapgeoplatform.com on 2/13/2020

# Slope Map



Map created by digital mapping solutions team on 2/17/2020



Aspect Map

